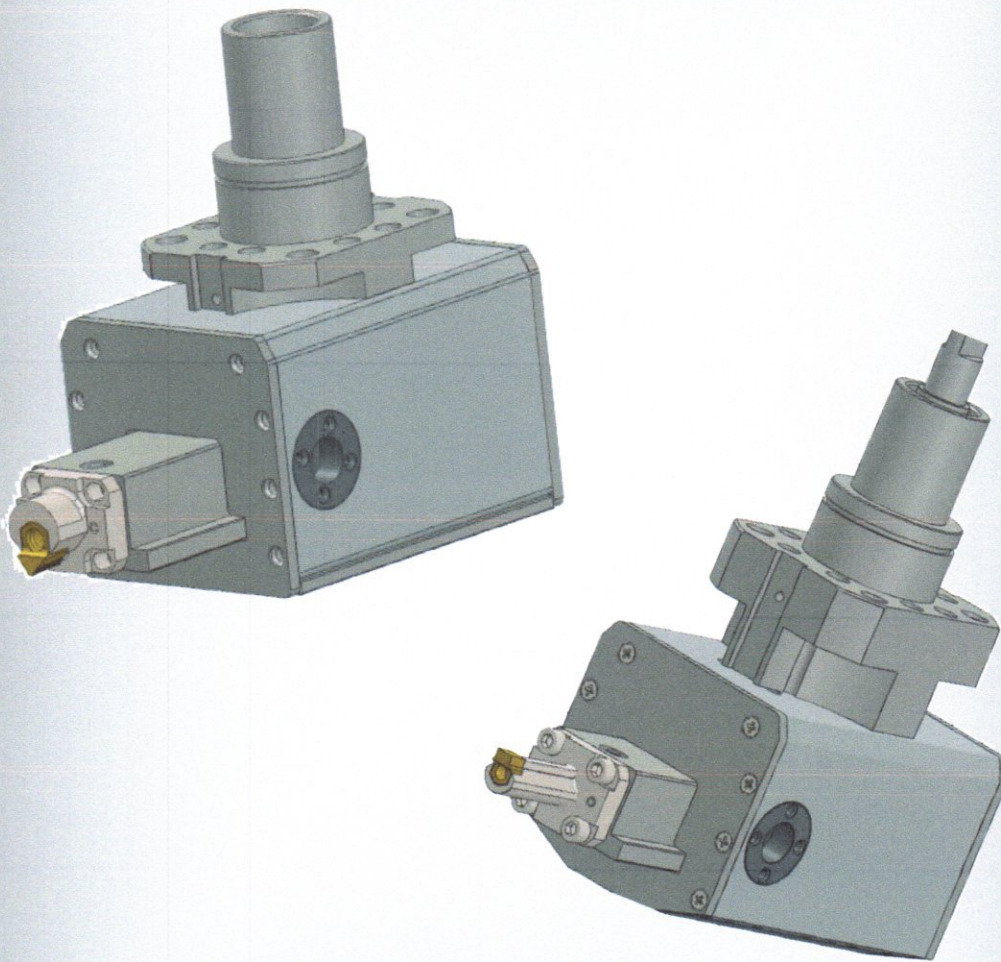
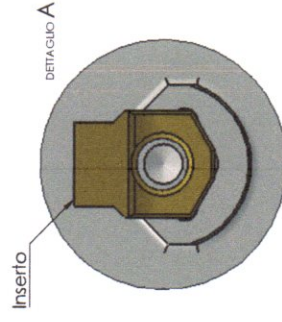
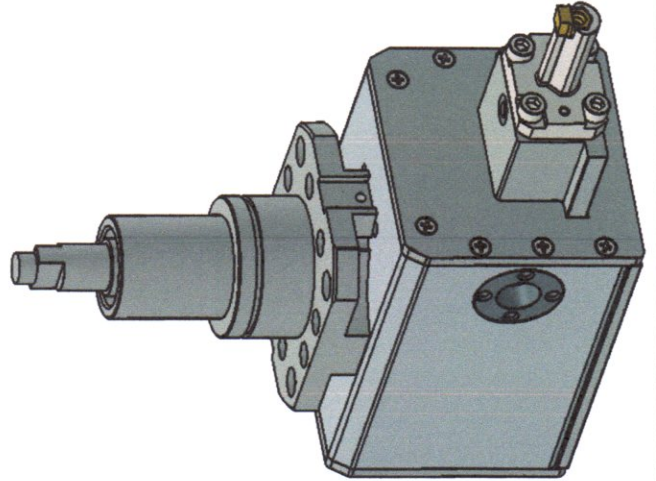
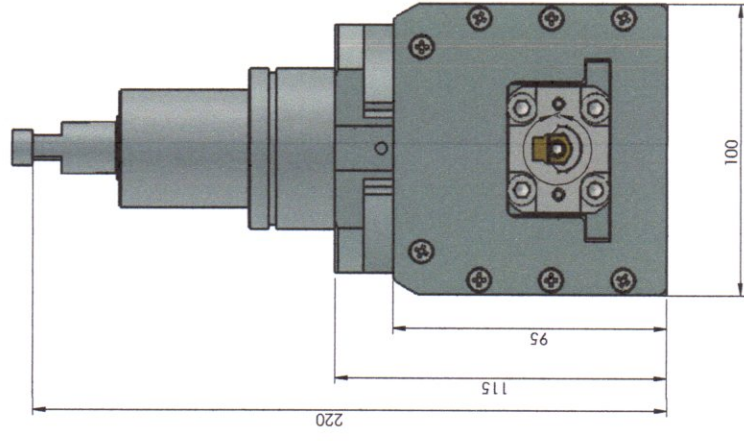
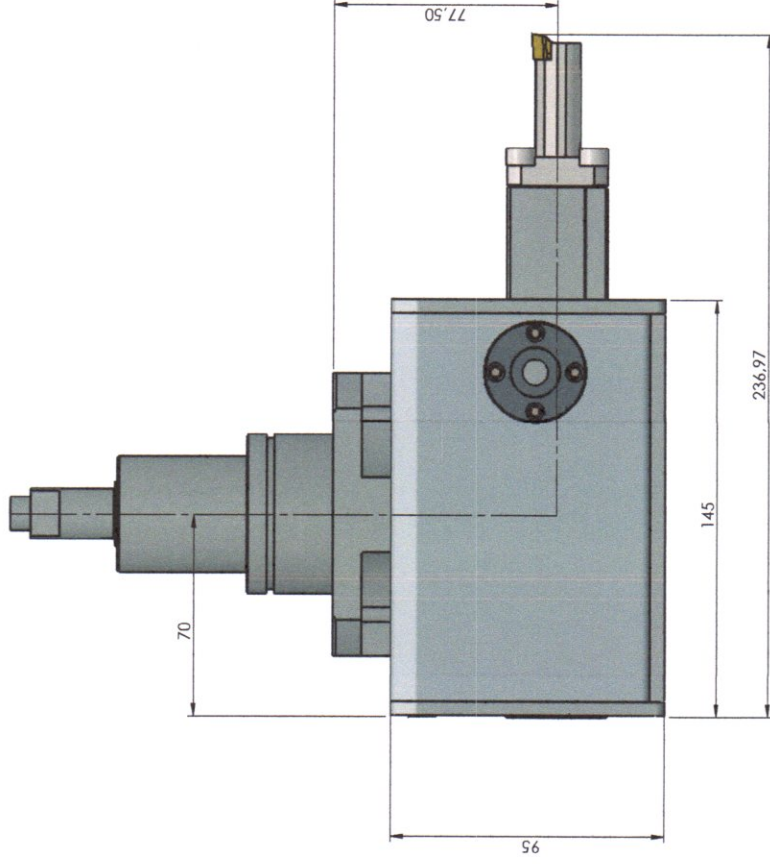
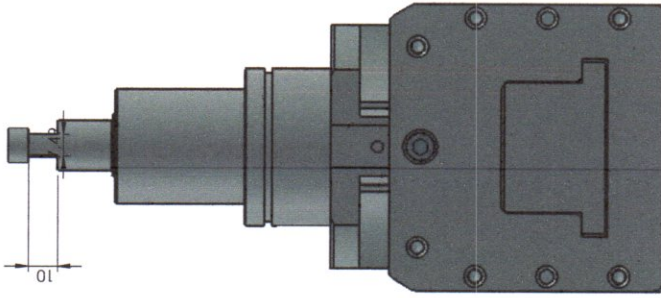




2R Utensili s.r.l.



*Programma
Stozzatura*

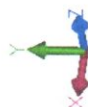
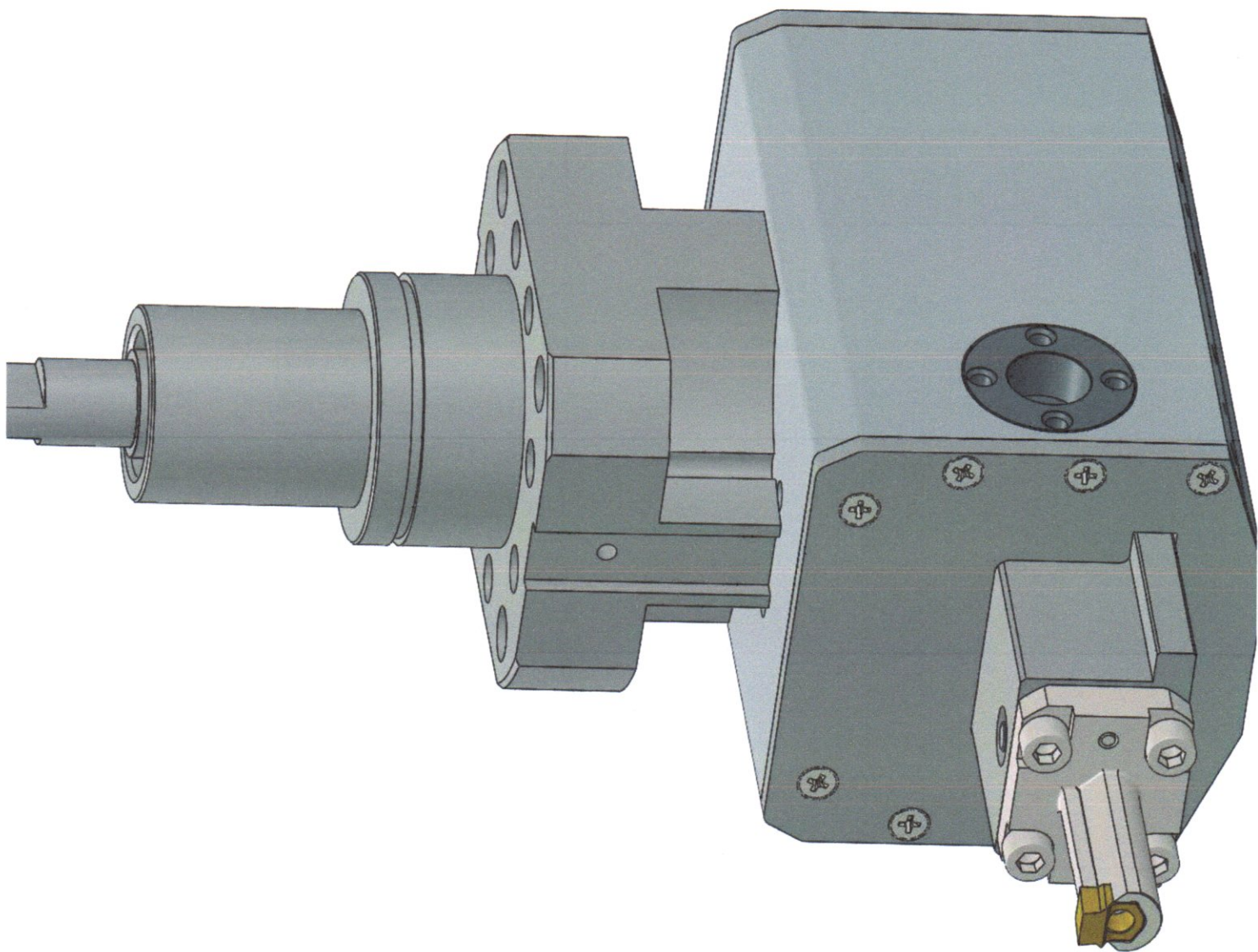


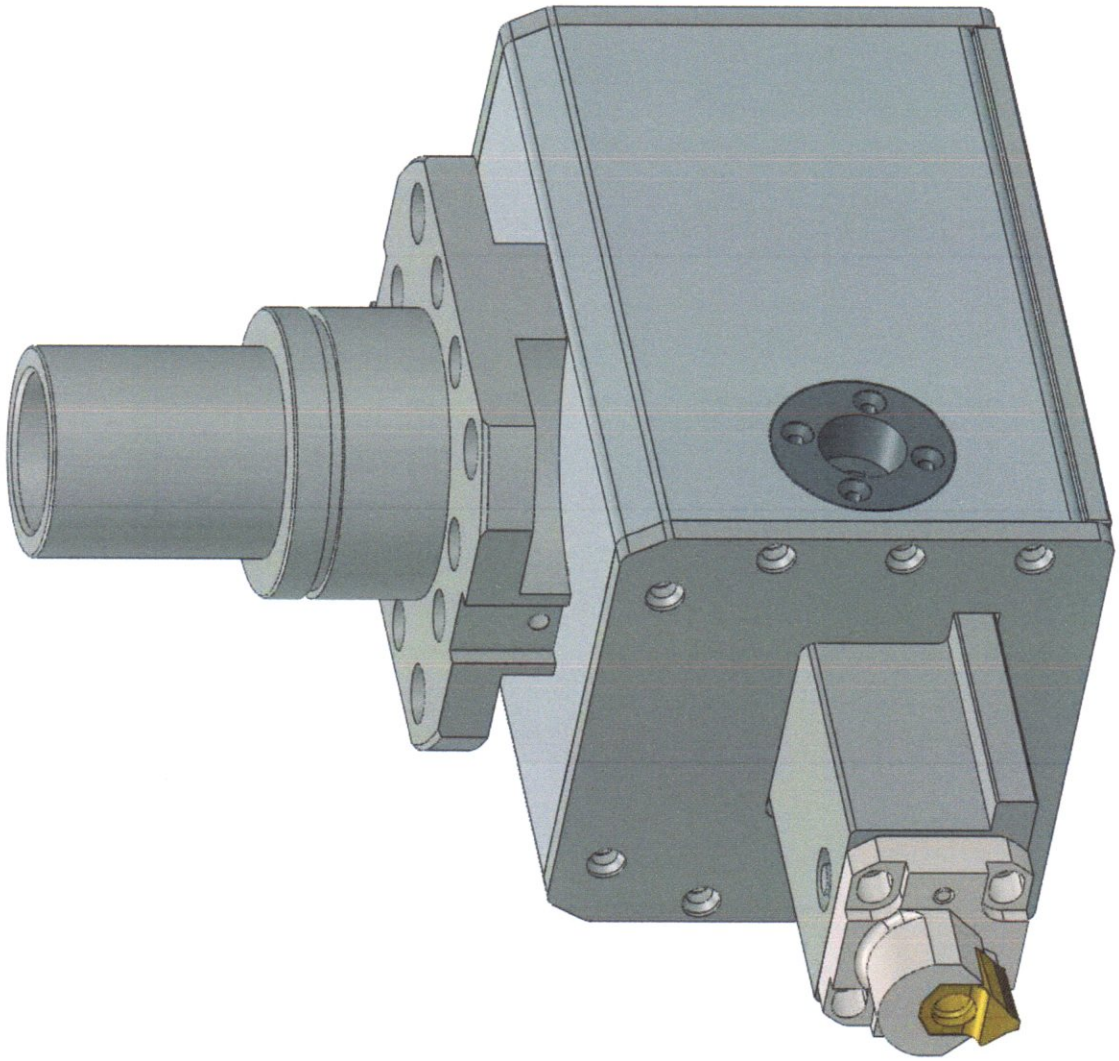
REVISIONE:
DISEGNO:
VERIFICA:
APPROVAZIONE:
FABBRICAZIONE:
CANTIERE:

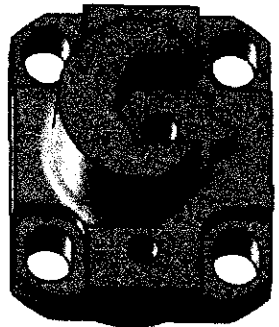
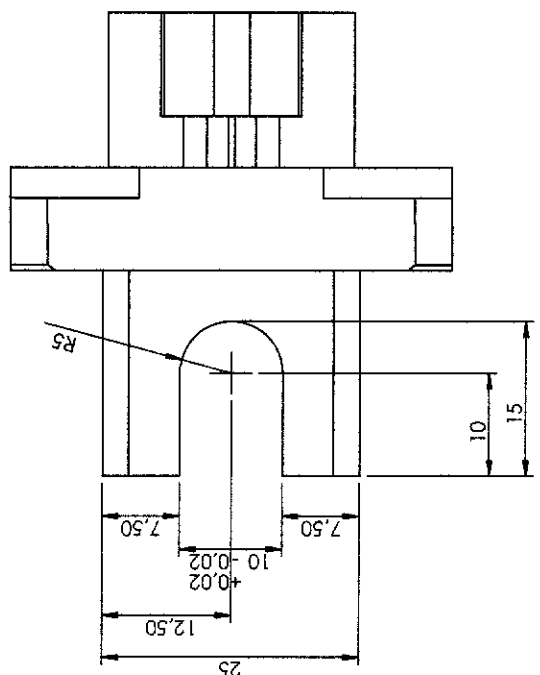
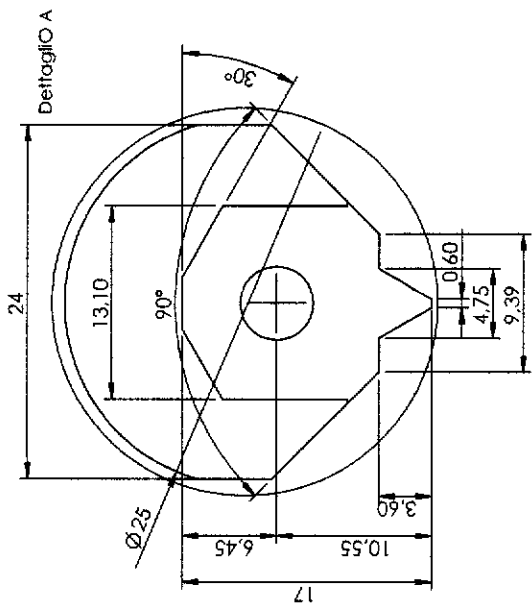
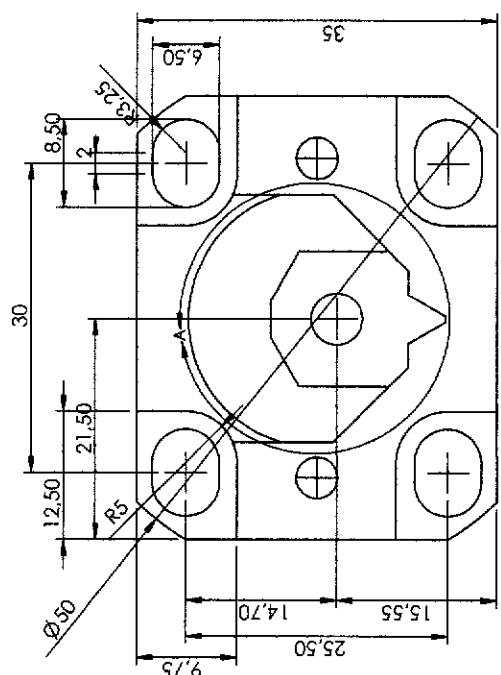
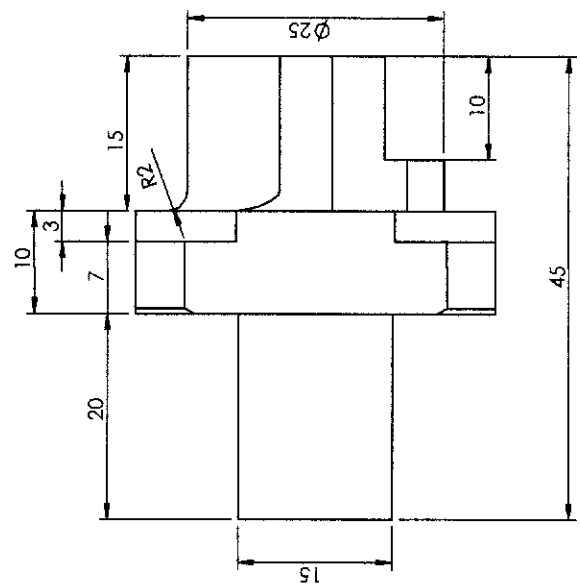
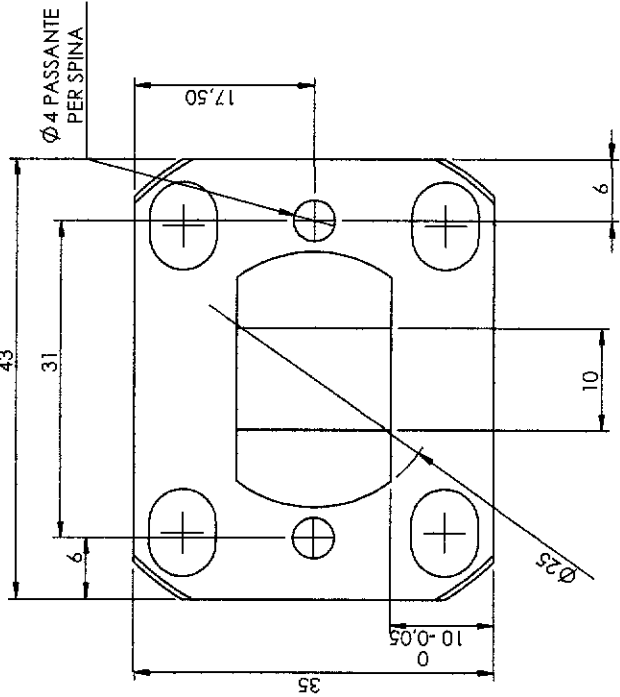
NUMERO:
DATA:
FIRMA:
NOME:
DIREZIONE:
VERIFICA:
APPROVAZIONE:
FABBRICAZIONE:
CANTIERE:

REVISIONE	
TITOLO:	ST Corsa 35
N. DISEGNO	A3
SCALA: 1:1	

MATERIALE:	
DESCRIZIONE:	
PRODOTTORE:	
REVISIONE:	
DATA:	
FIRMA:	
NOME:	
DIREZIONE:	
VERIFICA:	
APPROVAZIONE:	
FABBRICAZIONE:	
CANTIERE:	

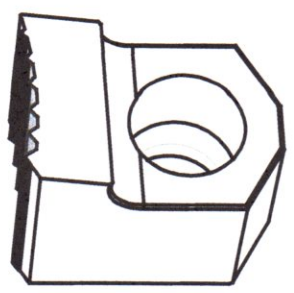
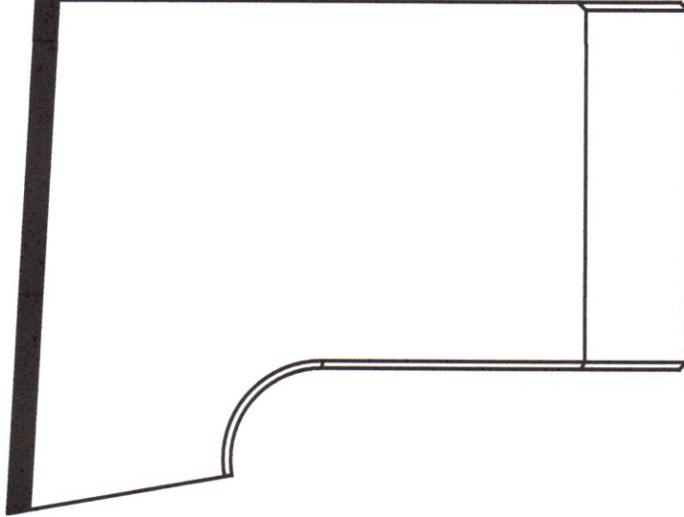
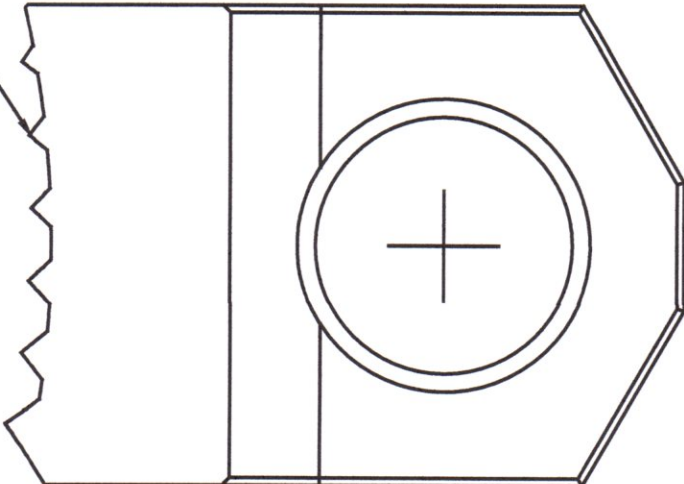







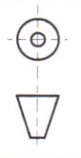
Codice	ST-00008	Data	24/03/17
Scala		Tolleranze non quotate	+/-0,05mm
Processo		Materiale	39NiCrMo4

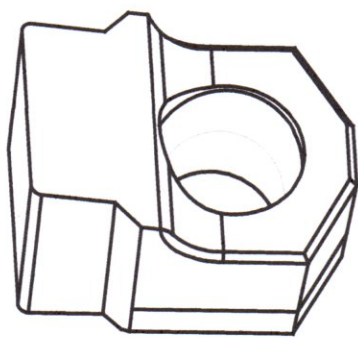
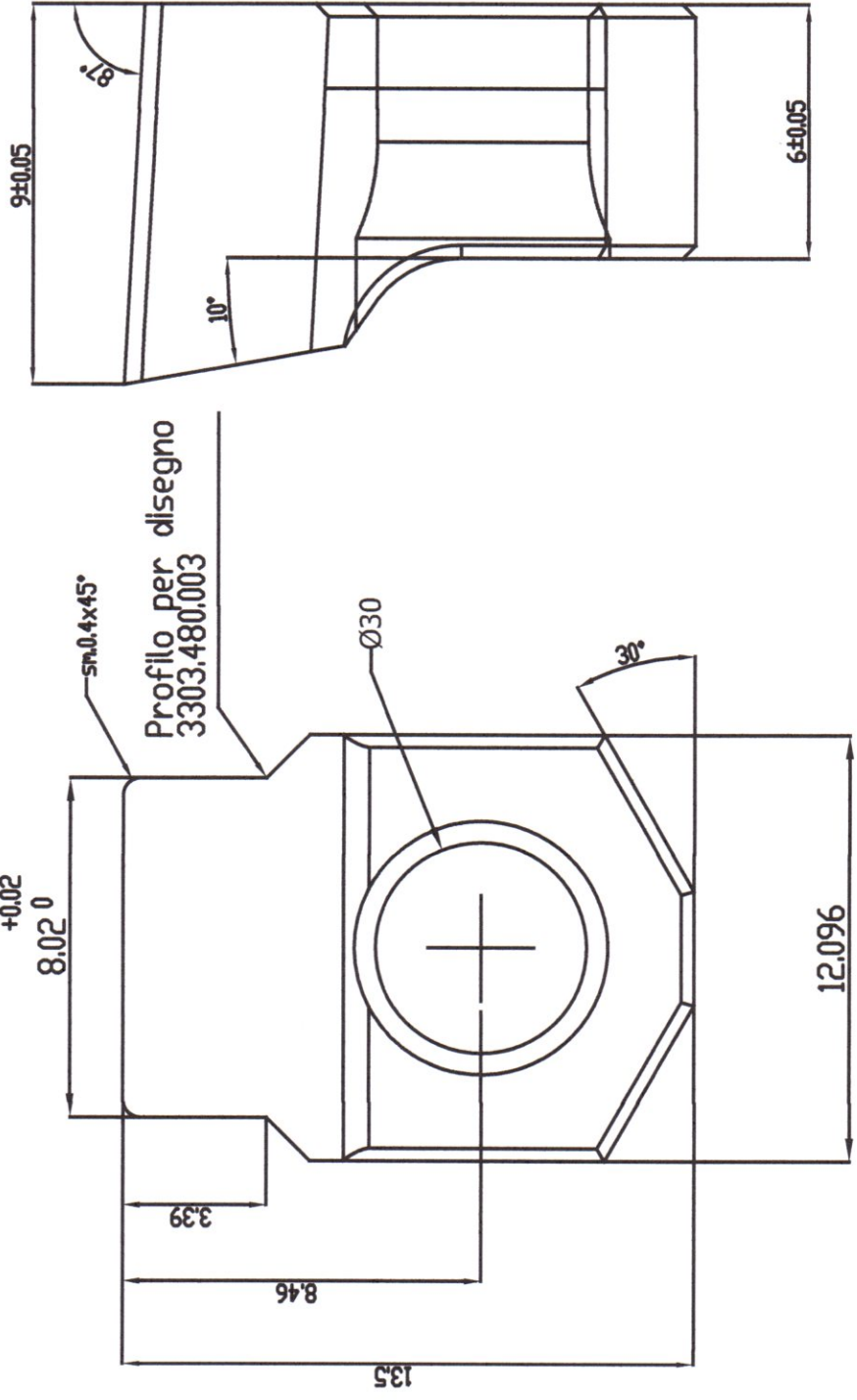
Profilo secondo disegno
3311302016



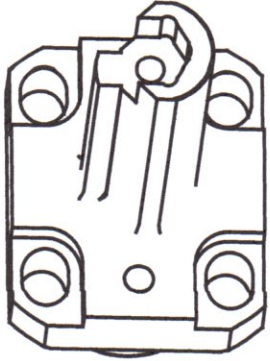
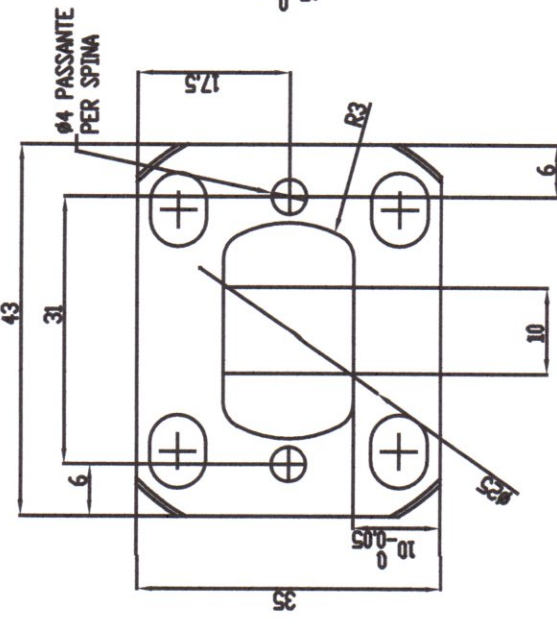
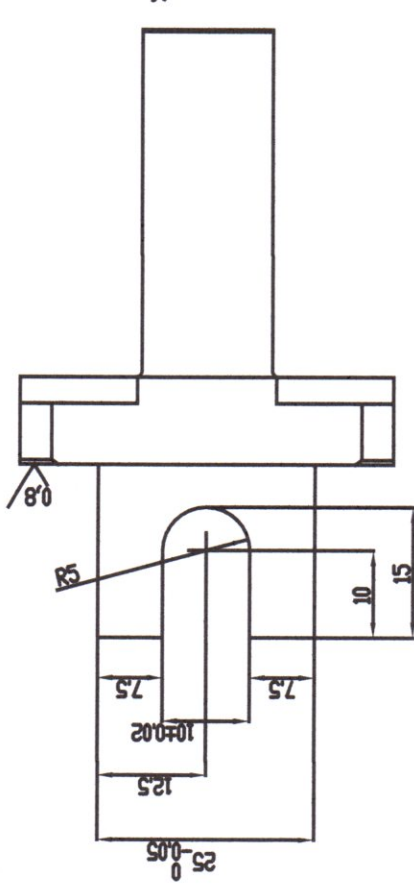
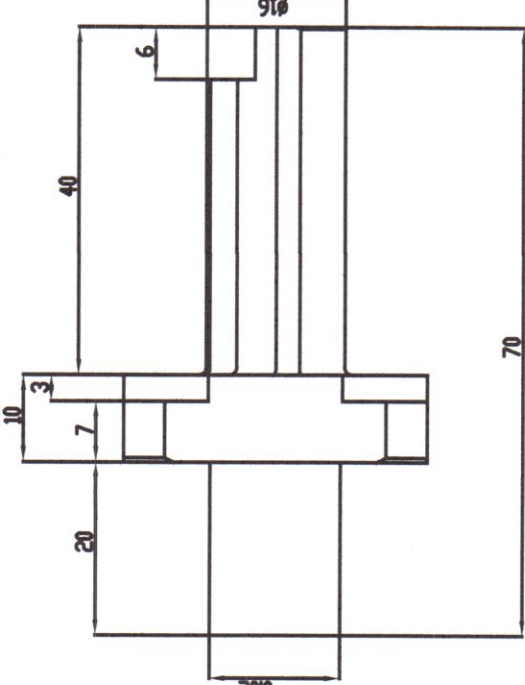
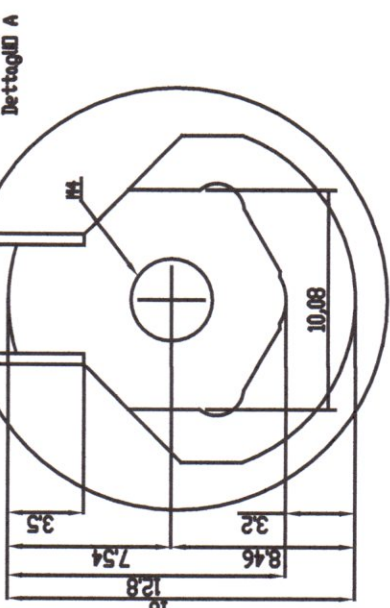
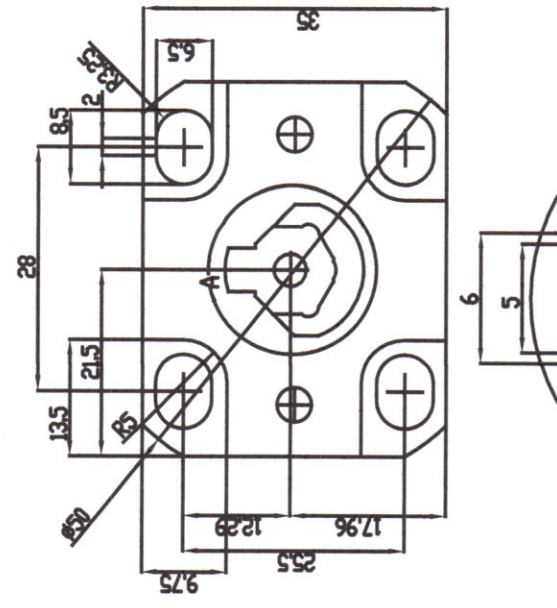
Disegnatore - Designer
el Campo M.

Modifica

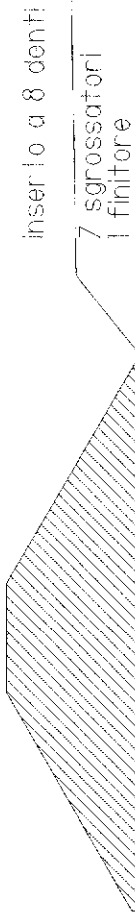
 <p>2R Utensili s.r.l.</p>		<p>N° Disegno - Drawing n° IN-261017004</p>	
<p>Descrizione - Description Inserto per millerighe</p>		<p>Materiale da lavorare - Machining material *****</p>	
<p>Materiale utensile - Tool material *****</p>		<p>Materiale da lavorare - Machining material *****</p>	
<p>N° Dis. Cliente Customer Drw.n°</p>		<p>Cod. cliente - Cod. Customer ***</p>	
<p>Scala - Scale</p>		<p>Marcare - Marking *****</p>	
<p>Tolleranze generali: diametri: ±0.03 salti: ±0.05 angoli: ±1° raggi: ±0.1</p>		<p>Rivestimento - Coating *****</p>	
<p>File</p>		<p>Note</p>	
		<p>Data - Date *****</p>	



N° Disegno - Drawing n° IN-261017003		Descrizione - Description *****		Materiale utensile - Tool material *****		Materiale da lavorare - Machining material *****		Marcare - Marking *****		Data - Date ****	
Tolleranze generali: diametri: ±0.03 salti: ±0.05 angoli: ±1° raggi: ±0.1		Scala - Scale		N° Dis. Cliente Customer Drw.n°		Cod. cliente - Cod. Customer ***		Rivestimento - Coating *****		Note	
RR 2R Utensili s.r.l.		File		*****		*****		*****		*****	



N° Disegno - Drawing n° ST-00008-6		Descrizione - Description Porta inserto				N° Dis. Cliente Customer Drw.n°		N° Disegno - Drawing n° 39NICrMo4		Materiale da lavorare - Machining material 39NICrMo4		Materiale utensile - Tool material *****		Cod. cliente - Cod. Customer *****		Data - Date *****	
Tolleranze generali: diametri: ± 0.03 salti: ± 0.05 angoli: $\pm 1^\circ$ raggi: ± 0.1				Scala - Scale				Rivestimento - Coating *****				Note					
File				File				*****				*****					



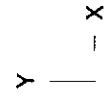
$Z = 90$

$M = 1.6$

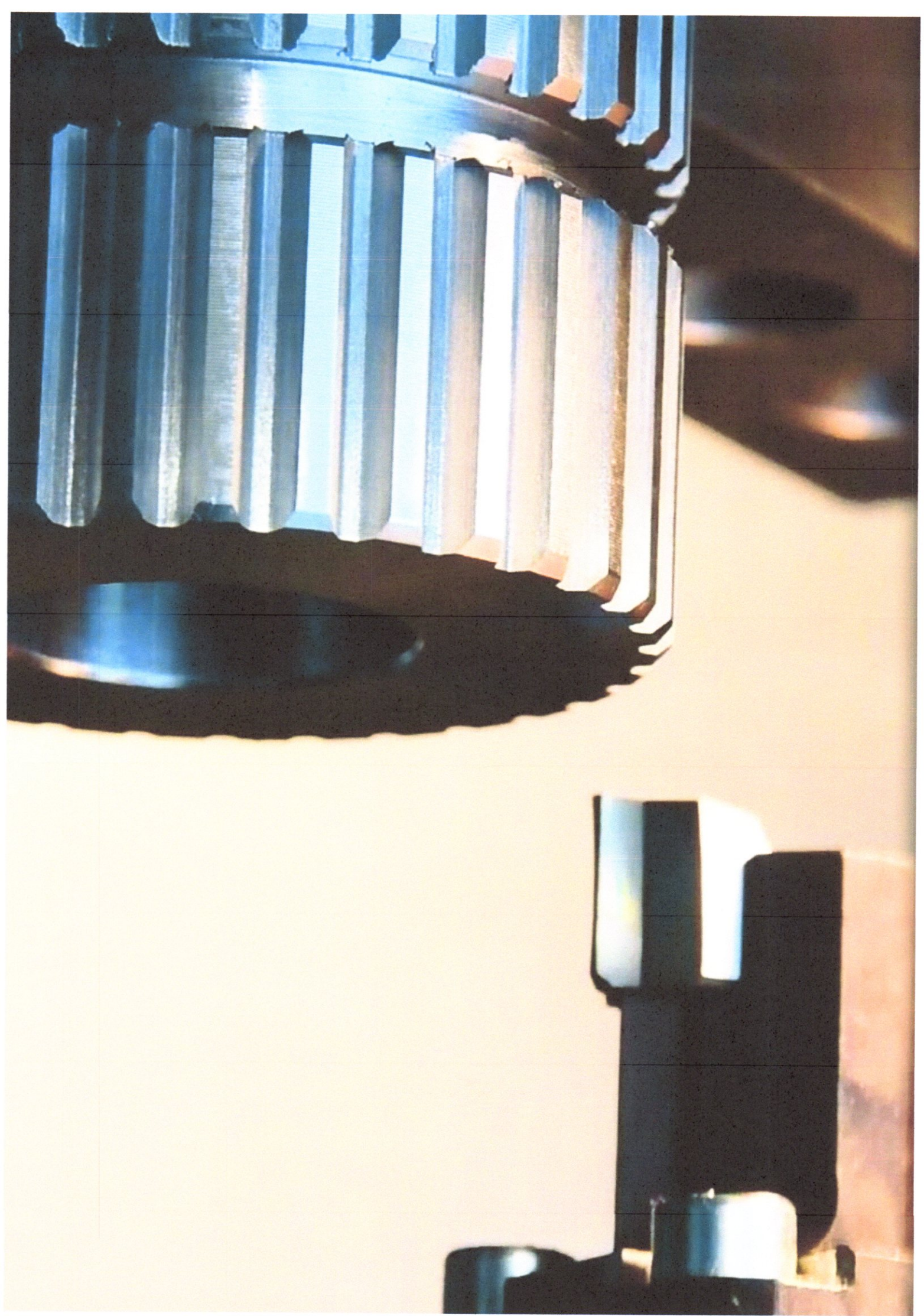
$AP = 90^\circ$

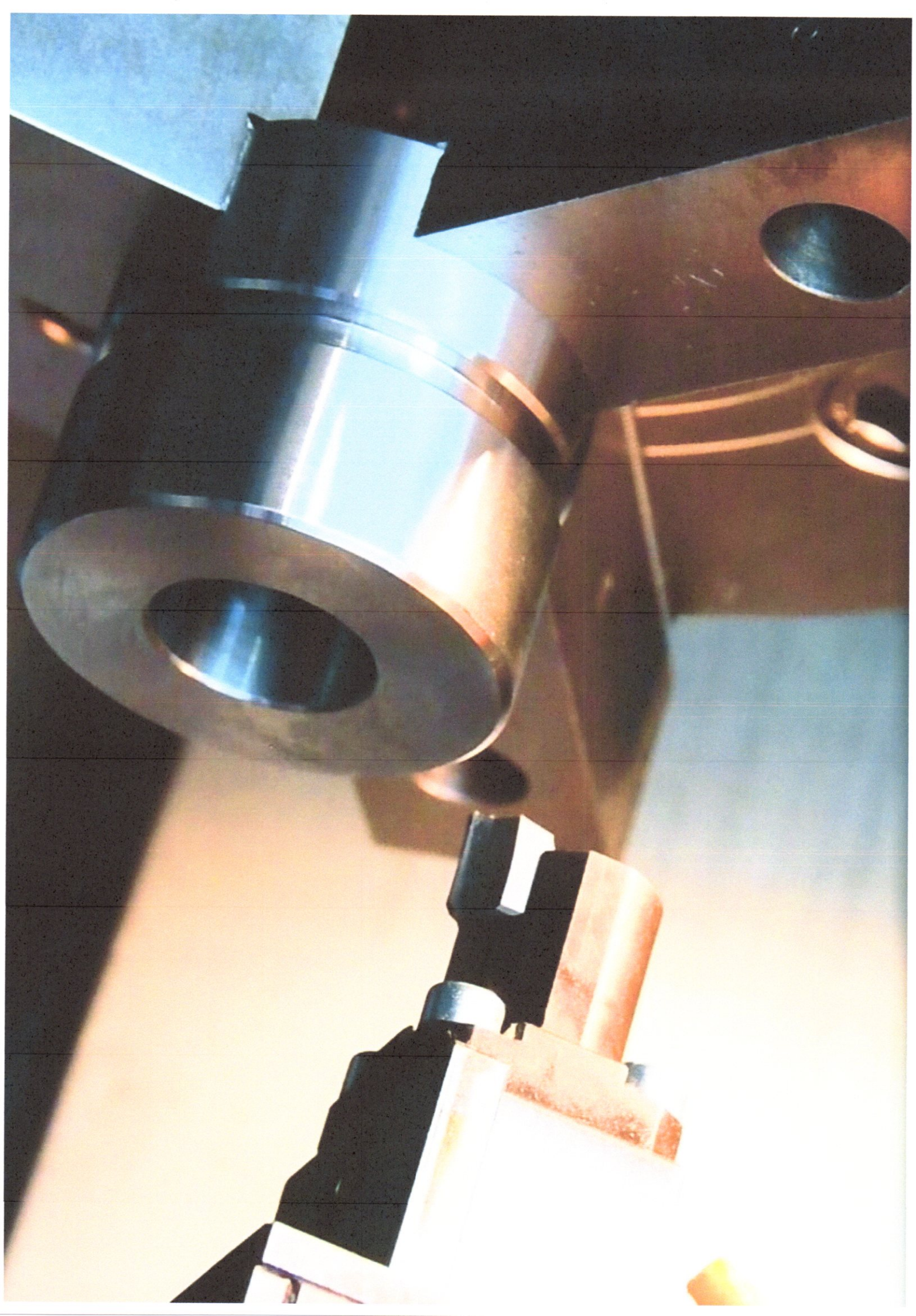
- distanza della dentatura 0.10
- numero battuto $Z + 7$ di finitura
- tempo singolo dente 0.5 secondi
- totale tempo dentatura 45 sec / 1 minuto

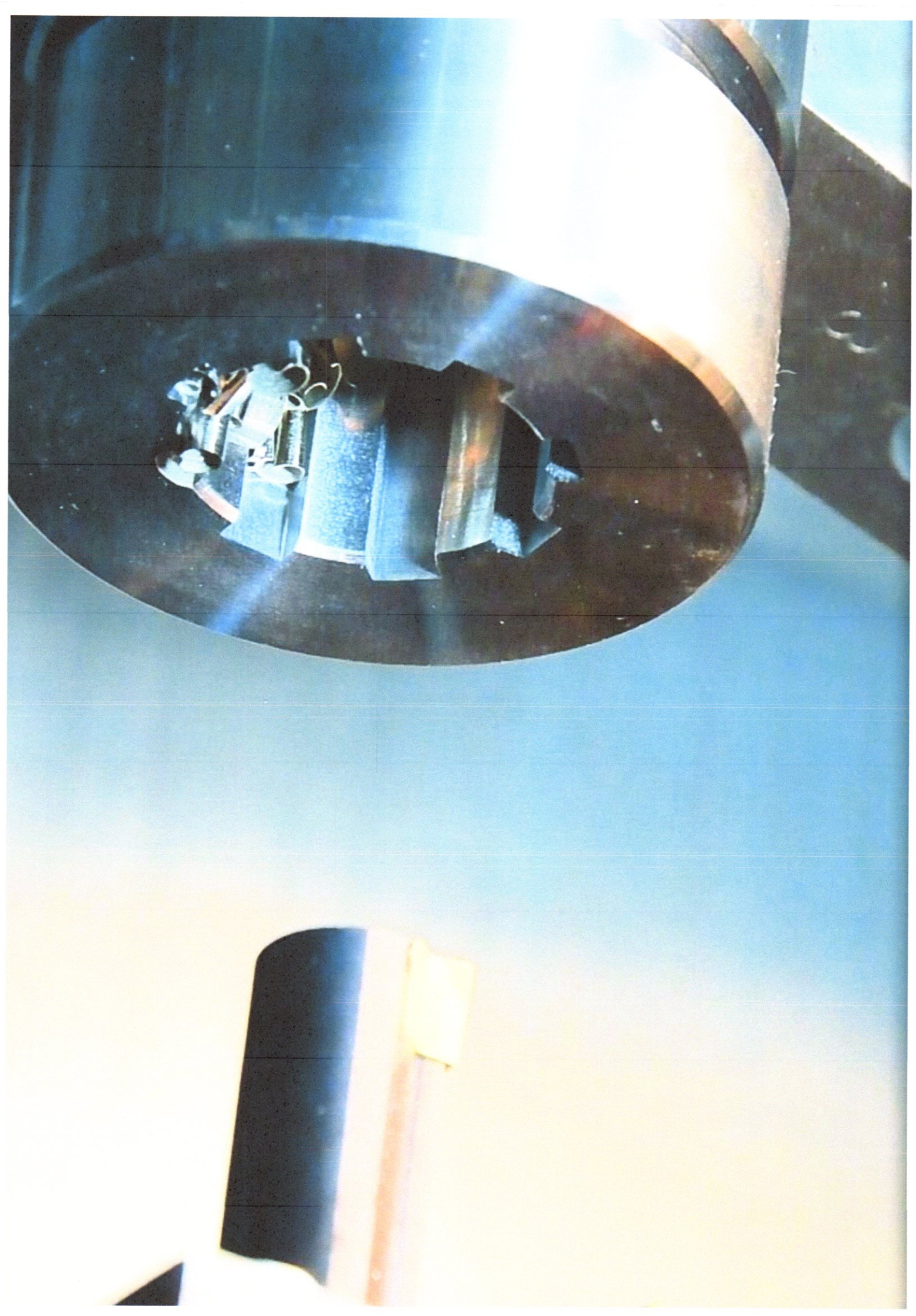
0.100

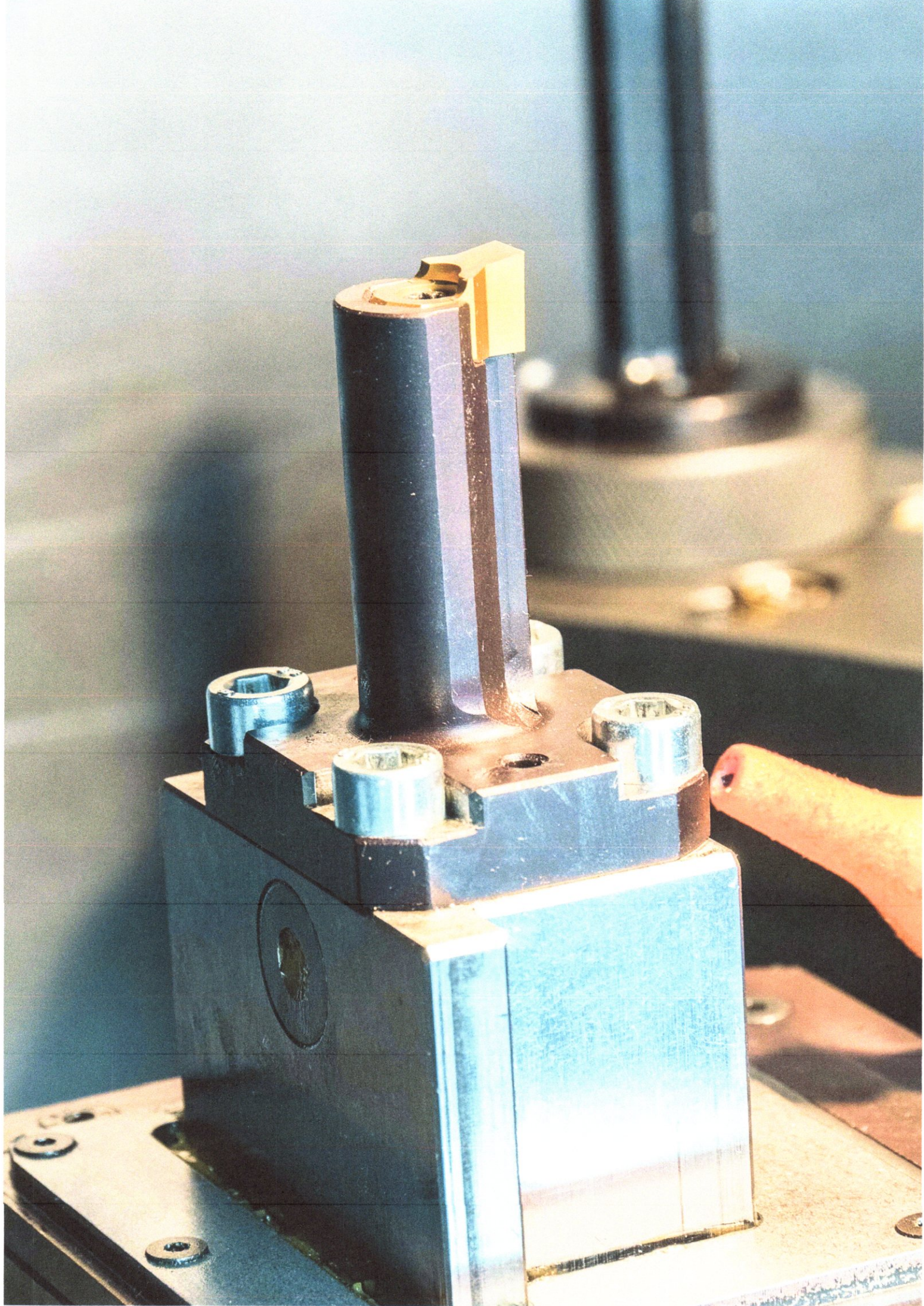


mm











2R Utensili s.r.l.

2R Utensili s.r.l. Via Giorgione 34/A - 41012 Carpi (Modena)
tel. +39 0596550821 - fax. +39 0596311336 email. info@2rutensili.it
www.2rutensili.it